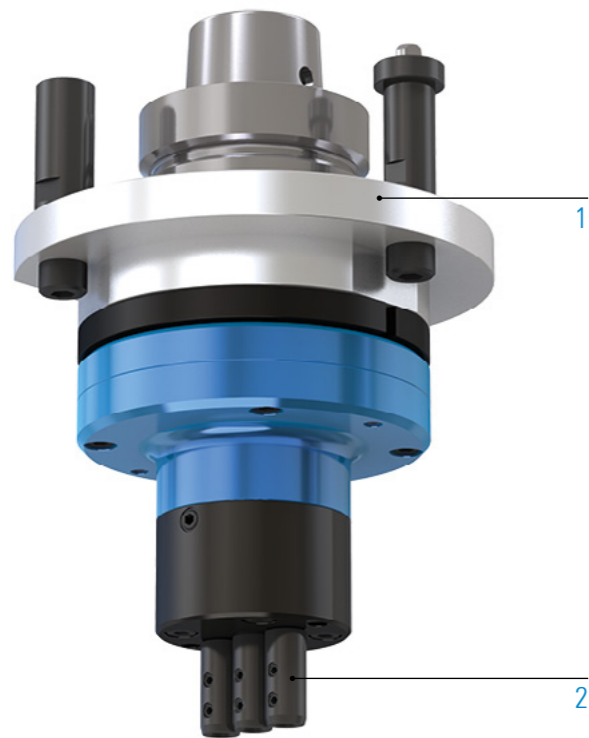


MULTI-SPINDLE HEAD MULTI V3 CABINEO

TECHNICAL DATA

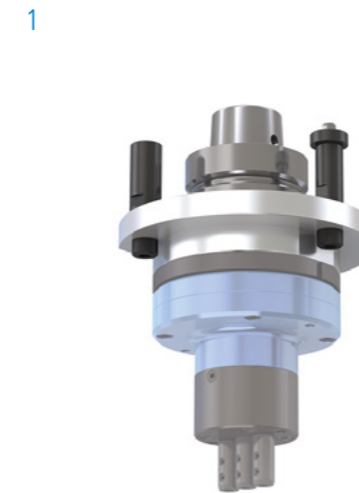


Lubrication Grease
 Max. drive speed n_2 10,000 rpm
 Transmission ratio ($n_1: n_2$) 1:1
 Max. drive torque M_2 3 Nm
 Weight about 4 kg

STANDARD DESIGN

- 1  Machine Connection
HSK - F63
- 2  Number of spindles
3
-  Spindle distance
11,2
-  Output spindle
Weldon Ø6

ADDITIONAL OPTIONS: MODULAR DESIGN



MACHINE CONNECTION



NUMBER OF SPINDLES

3

SPINDLE DISTANCE

11,2





OUTPUT SPINDLE



MACHINING



SPECIFICATIONS

-  Number of output spindles
-  Axis angle
-  C-angle
-  Grease lubrication

VIDEO



Multi-spindle head - live in the application
 Scan QR code or go to:
www.youtube.com/BENZtooling

TECHNICAL DRAWING

