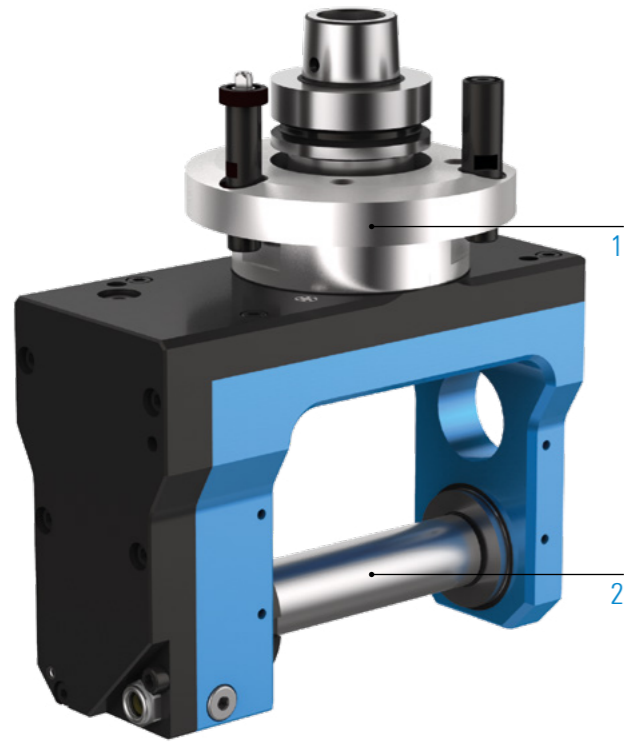



MOULDER HEAD – PREMIUM LINE MOULDER

TECHNICAL DATA

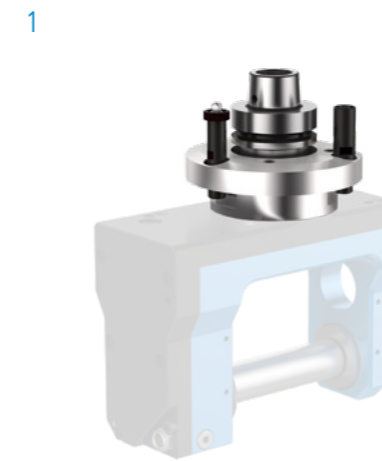


Lubrication	Oil bath
Max. drive speed n_2	10,000rpm
Transmission ratio ($n_1: n_2$)	1:0.7
Max. drive torque M_2	25 Nm
Weight	about 10 kg
Max. tool diameter	Ø180

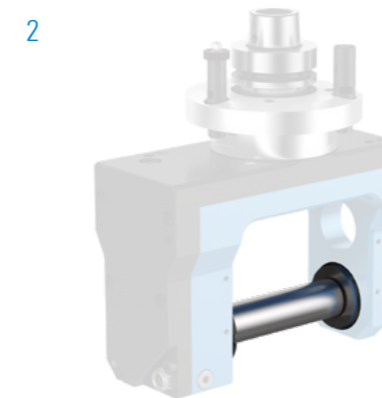
STANDARD DESIGN

- 1  Machine Connection
HSK - F63
- 2  Output spindle
Arbor Ø30, tool length 120 mm

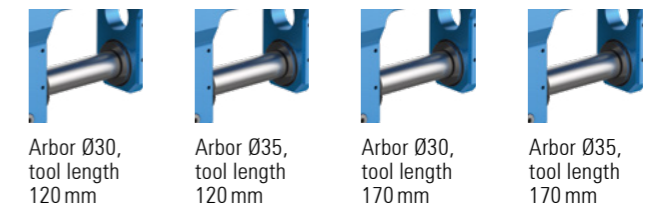
ADDITIONAL OPTIONS: MODULAR DESIGN



MACHINE CONNECTION



OUTPUT SPINDLE







 Additional arbor diameters and tool lengths on request

MACHINING

-  Milling
-  Sawing
-  Planing
-  Brushing

SPECIFICATIONS

-  1 Number of output spindle
-  90° Axis angle
-  4x 90° C-angle
-  Oil bath lubrication

VIDEO



Unit - live in the application
Scan QR code or go to:
www.youtube.com/BENZtooling

TECHNICAL DRAWING

