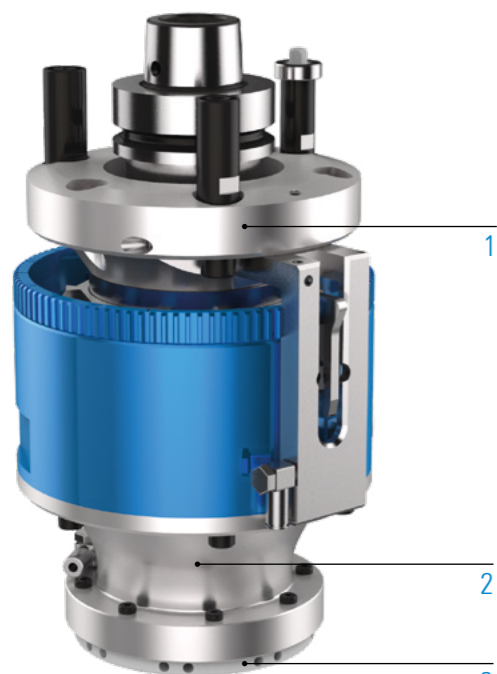


FLOATING TRIMMING UNIT – CLASSIC LINE FLOATING V

TECHNICAL DATA



Lubrication **Grease**
 Max. drive speed n_2 **18,000rpm**
 Transmission ratio ($n_1: n_2$) **1:1**
 Max. drive torque M_2 **10 Nm**
 Weight **about 6 kg**

STANDARD DESIGN

- 1  Machine connection
HSK - F63
- 2  Output spindle
BENZ Solidfix® S3
- 3  **70** Internal diameter of floating ring

MACHINING




Drilling




Milling

SPECIFICATIONS

 Number of output spindles

 Axis angle

 Grease lubrication

VIDEO



Unit - live in the application
 Scan QR code or go to:
www.youtube.com/BENZtooling

TECHNICAL DRAWING



ADDITIONAL OPTIONS: MODULAR DESIGN

1



MACHINE CONNECTION

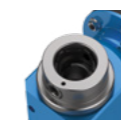


 Weitere Informationen S. 106


2



OUTPUT SPINDLE



BENZ
Solidfix® S3


 Weitere Informationen S. 108

3



INTERNAL DIAMETER OF FLOATING RING



 Additional internal diameters of floating ring on request