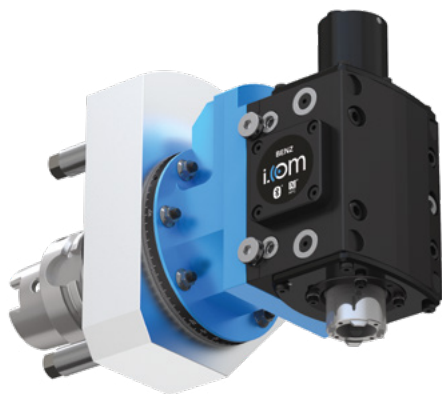


# BROACHING UNIT FOR MACHINING CENTERS

## BENZ LINA 4.0 - RADIAL

### TECHNICAL DATA



Broaching machining



Actuating angle  
90°



Internal + external cooling

#### TYPE



i = 1:1



i = 1:1

#### L1



variable



variable

#### TOOL HOLDER



Prism holder  
Ø 30 mm

#### MACHINE INTERFACE



SK



HSK



MAS BT



CAT



Coromant  
Capto®



KM™



More on  
request



For questions regarding BENZ i.com please contact our BENZ Sales Team..

#### Performance data

GS	i	EC / IC	IC p <sub>max</sub> [bar]	n <sub>1 max</sub> / *n <sub>2 max</sub> [min <sup>-1</sup> ]	M <sub>1 max</sub> / F <sub>c max</sub> [Nm]	f [mm]	**Groove width <sub>max</sub> [mm]
Usable working stroke = 32 mm	2:1	✓/✓	50	3000 / 1500	15 / 1700	0,02 - 0,10	12
Total Stroke = 34 mm							

\*double stroke per minute

\*\*depending on the material to be machined

#### Performance data

GSL	i	EC / IC	IC p <sub>max</sub> [bar]	n <sub>1 max</sub> / *n <sub>2 max</sub> [min <sup>-1</sup> ]	M <sub>1 max</sub> / F <sub>c max</sub> [Nm]	f [mm]	**Groove width <sub>max</sub> [mm]
Usable working stroke = 51 mm	2:1	✓/✓	50	2000 / 1000	23 / 1700	0,02 - 0,10	12
Total Stroke = 53 mm							

\*double stroke per minute

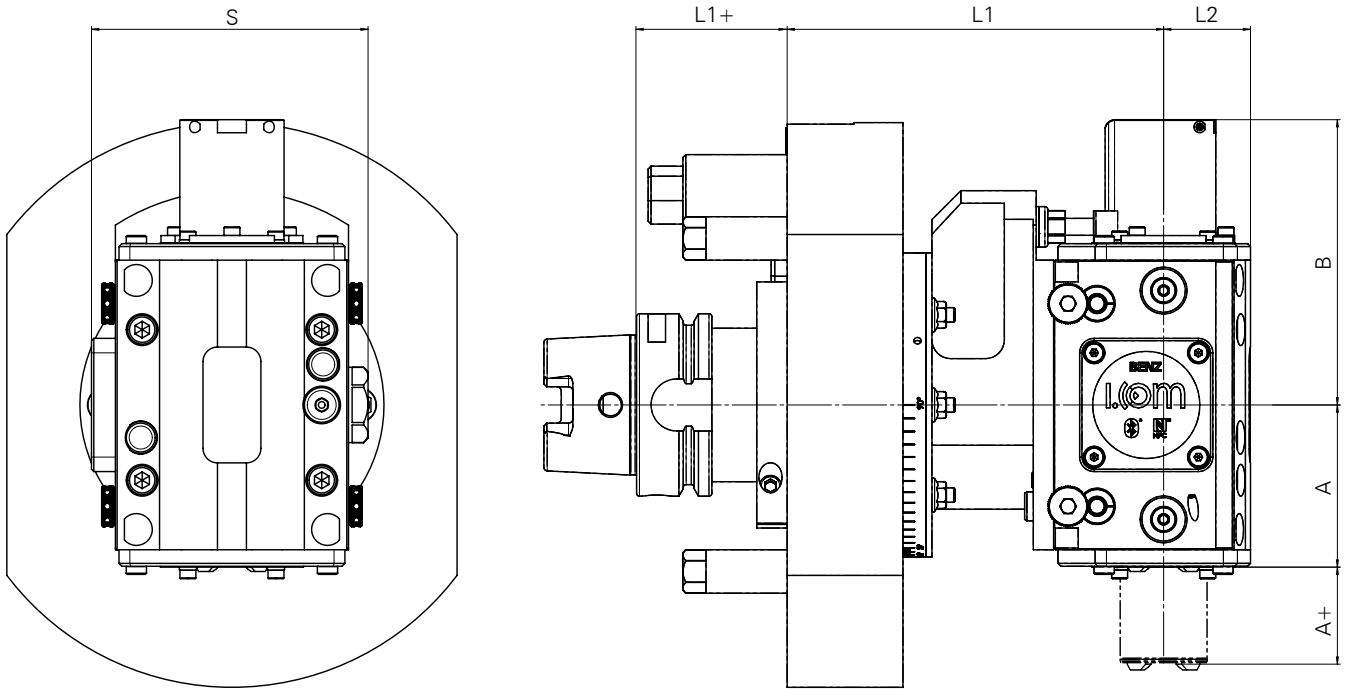
\*\*depending on the material to be machined

For more information about the product or to order, please contact our **BENZ sales team**



CONTACT

please click here ▶



Technical Data

Typ	Size Plunger	**A+ [mm]	A [mm]	B [mm]	L1 [mm]	L2 [mm]	S [mm]	Weight [kg]*
GS	30	32 / 34	86,5	68,5	■	30	95,5	8-9
GSL	30	51 / 53	116,5	87,5	■	30	115,5	11-12

■ Dimension depends on machine geometry

\*varies based on base holder

\*\*usable working stroke / total stroke

PRODUCT INFORMATION



[www.benztooling.com/en](http://www.benztooling.com/en)