

# STATIC HOLDERS DIN 69880

Catalog

Metal Machining



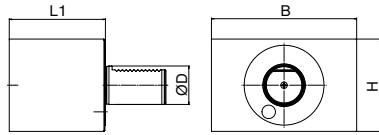
# STATIC HOLDER FORM A

## Blank-rectangular: form A1



### ▶ Technical Data

#### Drawing



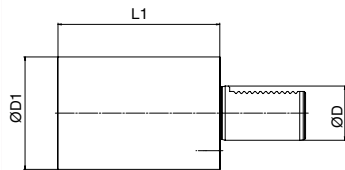
VDI ØD	H [mm]	B [mm]	L1 [mm]	Order No.
16	44	78	44	<b>241.5507844</b>
20	60	100	65	<b>112.55010065</b>
25	60	100	75	<b>325.55010075</b>
30	76	130	85	<b>113.55013085</b>
40	96	151	100	<b>114.550151100</b>
50	120	160	125	<b>115.550160125</b>
60	125	165	160	<b>116.550165160</b>

## Blank-round: form A2



### ▶ Technical Data

#### Drawing



VDI ØD	ØD1 [mm]	L1 [mm]	Order No.
16	40	60	<b>241.1024060</b>
20	50	70	<b>112.1025070</b>
25	58	80	<b>325.1025880</b>
30	68	100	<b>113.10268100</b>
40	83	120	<b>114.10283120</b>
50	98	135	<b>115.10298135</b>
60	123	150	<b>116.102123150</b>

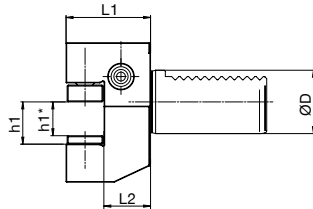
# STATIC HOLDER FORM B

## O.D. Turning Tool: right hand, short, form B1



### ► Technical Data

#### Drawing



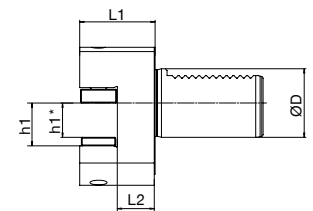
VDI ØD	h1/h1* [mm]	L1 [mm]	L2 [mm]	Order No.
16	12	24	13	<b>241.5511213</b>
20	16/12	30	16	<b>112.5511616</b>
25	16/12	30	16	<b>325.5511616</b>
30	20/16	40	22	<b>113.5512022</b>
40	25/20	44	22	<b>114.5512522</b>
50	32/25	55	30	<b>115.5513230</b>
60	32/25	60	30	<b>116.5513230</b>

## O.D. Turning Tool: left hand, short, form B2



### ► Technical Data

#### Drawing



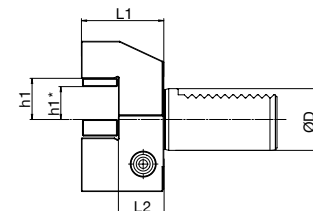
VDI ØD	h1/h1* [mm]	L1 [mm]	L2 [mm]	Order No.
16	12	24	13	<b>241.5521213</b>
20	16/12	30	16	<b>112.5521616</b>
25	16/12	30	16	<b>325.5521616</b>
30	20/16	40	22	<b>113.5522022</b>
40	25/20	44	22	<b>114.5522522</b>
50	32/25	55	30	<b>115.5523230</b>
60	32/25	60	30	<b>116.5523230</b>

## O.D. Turning Tool: overhead, right hand, short, form B3



### ► Technical Data

#### Drawing



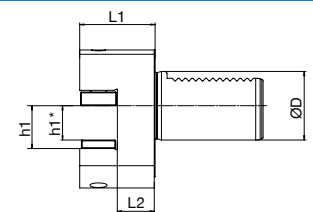
VDI ØD	h1/h1* [mm]	L1 [mm]	L2 [mm]	Order No.
16	12	24	13	<b>241.5531213</b>
20	16/12	30	16	<b>112.5531616</b>
25	16/12	30	16	<b>325.5531616</b>
30	20/16	40	22	<b>113.5532022</b>
40	25/20	44	22	<b>114.5532522</b>
50	32/25	55	30	<b>115.5533230</b>
60	32/25	60	30	<b>116.5533230</b>

## O.D. Turning Tool: overhead, left hand, short, form B4



### ► Technical Data

#### Drawing



VDI ØD	h1/h1* [mm]	L1 [mm]	L2 [mm]	Order No.
16	12	24	13	<b>241.5541213</b>
20	16/12	30	16	<b>112.5541616</b>
25	16/12	30	16	<b>325.5541616</b>
30	20/16	40	22	<b>113.5542022</b>
40	25/20	44	22	<b>114.5542522</b>
50	32/25	55	30	<b>115.5543230</b>
60	32/25	60	30	<b>116.5543230</b>

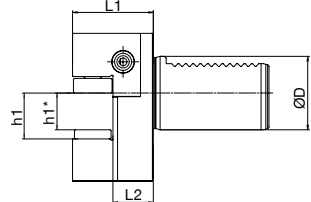
# STATIC HOLDER FORM B

## O.D. Turning Tool: right hand, long, form B5



### Technical Data

#### Drawing



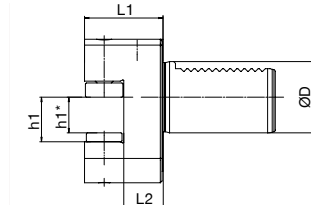
VDI ØD	h1/h1* [mm]	L1 [mm]	L2 [mm]	Order No.
16	12	24	13	<b>241.5551213</b>
20	16/12	30	16	<b>112.5551616</b>
25	16/12	30	16	<b>325.5551616</b>
30	20/16	40	22	<b>113.5552022</b>
40	25/20	44	22	<b>114.5552522</b>
50	32/25	55	30	<b>115.5553230</b>
60	32/25	60	30	<b>116.5553230</b>

## O.D. Turning Tool: left hand, long, form B6



### Technical Data

#### Drawing



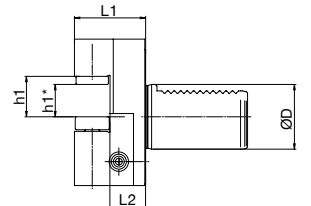
VDI ØD	h1/h1* [mm]	L1 [mm]	L2 [mm]	Order No.
16	12	24	13	<b>241.5561213</b>
20	16/12	30	16	<b>112.5561616</b>
25	16/12	30	16	<b>325.5561616</b>
30	20/16	40	22	<b>113.5562022</b>
40	25/20	44	22	<b>114.5562522</b>
50	32/25	55	30	<b>115.5563230</b>
60	32/25	60	30	<b>116.5563230</b>

## O.D. Turning Tool: overhead, right hand, long, form B7



### Technical Data

#### Drawing



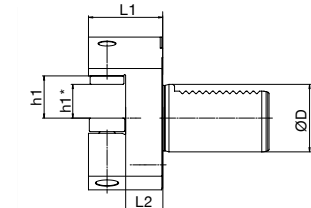
VDI ØD	h1/h1* [mm]	L1 [mm]	L2 [mm]	Order No.
16	12	24	13	<b>241.5571213</b>
20	16/12	30	16	<b>112.5571616</b>
25	16/12	30	16	<b>325.5571616</b>
30	20/16	40	22	<b>113.5572022</b>
40	25/20	44	22	<b>114.5572522</b>
50	32/25	55	30	<b>115.5573230</b>
60	32/25	60	30	<b>116.5573230</b>

## O.D. Turning Tool: overhead, left hand, long, form B8



### Technical Data

#### Drawing



VDI ØD	h1/h1* [mm]	L1 [mm]	L2 [mm]	Order No.
16	12	24	13	<b>241.5581213</b>
20	16/12	30	16	<b>112.5581616</b>
25	16/12	30	16	<b>325.5581616</b>
30	20/16	40	22	<b>113.5582022</b>
40	25/20	44	22	<b>114.5582522</b>
50	32/25	55	30	<b>115.5583230</b>
60	32/25	60	30	<b>116.5583230</b>

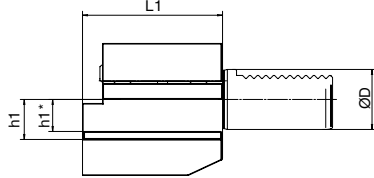
# STATIC HOLDER FORM C

## Face and I.D. Turning Tool: right hand, short, form C1



### ► Technical Data

#### Drawing



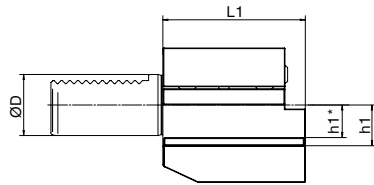
VDI ØD	h1/h1* [mm]	L1 [mm]	Order No.
16	12	44	<b>241.5611244</b>
20	16/12	55	<b>112.5611655</b>
25	16/12	55	<b>325.5611655</b>
30	20/16	70	<b>113.5612070</b>
40	25/20	85	<b>114.5612585</b>
50	32/25	100	<b>115.56132100</b>
60	32/25	125	<b>116.56132125</b>

## Face and I.D. Turning Tool: left hand, short, form C2



### ► Technical Data

#### Drawing



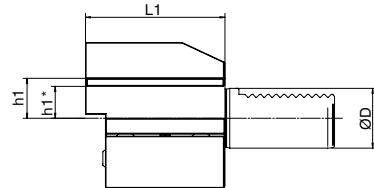
VDI ØD	h1/h1* [mm]	L1 [mm]	Order No.
16	12	44	<b>241.5621244</b>
20	16/12	55	<b>112.5621655</b>
25	16/12	55	<b>325.5621655</b>
30	20/16	70	<b>113.5622070</b>
40	25/20	85	<b>114.5622585</b>
50	32/25	100	<b>115.56232100</b>
60	32/25	125	<b>116.56232125</b>

## Face and I.D. Turning Tool: overhead, right hand, short, form C3



### ► Technical Data

#### Drawing



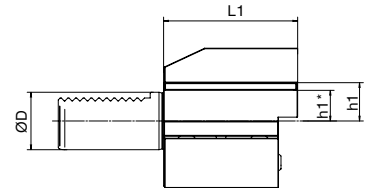
VDI ØD	h1/h1* [mm]	L1 [mm]	Order No.
16	12	44	<b>241.5631244</b>
20	16/12	55	<b>112.5631655</b>
25	16/12	55	<b>325.5631655</b>
30	20/16	70	<b>113.5632070</b>
40	25/20	85	<b>114.5632585</b>
50	32/25	100	<b>115.56332100</b>
60	32/25	125	<b>116.56332125</b>

## Face and I.D. Turning Tool: overhead, left hand, short, form C4



### ► Technical Data

#### Drawing



VDI ØD	h1/h1* [mm]	L1 [mm]	Order No.
16	12	44	<b>241.5641244</b>
20	16/12	55	<b>112.5641655</b>
25	16/12	55	<b>325.5641655</b>
30	20/16	70	<b>113.5642070</b>
40	25/20	85	<b>114.5642585</b>
50	32/25	100	<b>115.56432100</b>
60	32/25	125	<b>116.56432125</b>

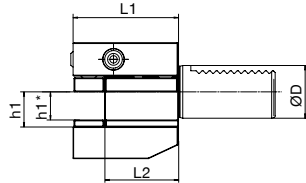
# STATIC HOLDER FORM D

## Multiple Square Seats Turning Tool: form D1



### ▶ Technical Data

#### Drawing



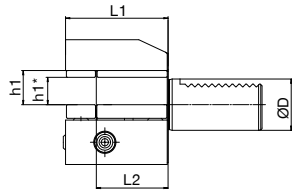
VDI ØD	h1/h1* [mm]	L1 [mm]	L2 [mm]	Order No.
25	16/12	48	34	<b>325.5651634</b>
30	20/16	60	42	<b>113.5652042</b>
40	25/20	72	50	<b>114.5652550</b>
50	32/25	85	60	<b>115.5653260</b>
60	32/25	110	85	<b>116.5653285</b>

## Multiple Square Seats Turning Tool: overhead, form D2



### ▶ Technical Data

#### Drawing



VDI ØD	h1/h1* [mm]	L1 [mm]	L2 [mm]	Order No.
25	16/12	48	34	<b>325.5661634</b>
30	20/16	60	42	<b>113.5662042</b>
40	25/20	72	50	<b>114.5662550</b>
50	32/25	85	60	<b>115.5663260</b>
60	32/25	110	85	<b>116.5663285</b>

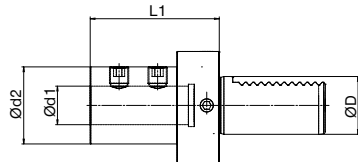
# STATIC HOLDER FORM E

## Boring Bar Holder: with IC, form E1



### ► Technical Data

#### Drawing



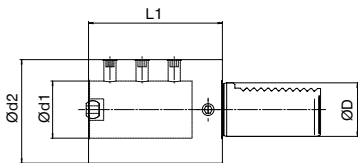
VDI ØD	Ød1 [mm]	Ød2 [mm]	L1 [mm]	Order No.
20	16	36	64	<b>112.5701664</b>
20	20	40	67	<b>112.5702067</b>
20	25	45	71	<b>112.5702571</b>
25	16	40	64	<b>325.5701664</b>
25	20	40	67	<b>325.5702067</b>
25	25	45	71	<b>325.5702571</b>
30	16	36	64	<b>113.5701664</b>
30	20	40	67	<b>113.5702067</b>
30	25	45	71	<b>113.5702571</b>
30	32	52	75	<b>113.5703275</b>
30	40	65	90	<b>113.5704090</b>
40	16	36	64	<b>114.5701664</b>
40	20	40	67	<b>114.5702067</b>
40	25	45	75	<b>114.5702575</b>
40	32	52	75	<b>114.5703275</b>
40	40	65	90	<b>114.5704090</b>
50	20	40	67	<b>115.5702067</b>
50	25	45	80	<b>115.5702580</b>
50	32	52	80	<b>115.5703280</b>
50	40	65	90	<b>115.5704090</b>
50	50	75	100	<b>115.57050100</b>
60	20	40	80	<b>116.5702080</b>
60	25	45	80	<b>116.5702580</b>
60	32	52	80	<b>116.5703280</b>
60	40	65	90	<b>116.5704090</b>
60	50	75	100	<b>116.57050100</b>

## Boring Bar Holder: with IC + EC, form E2



### ► Technical Data

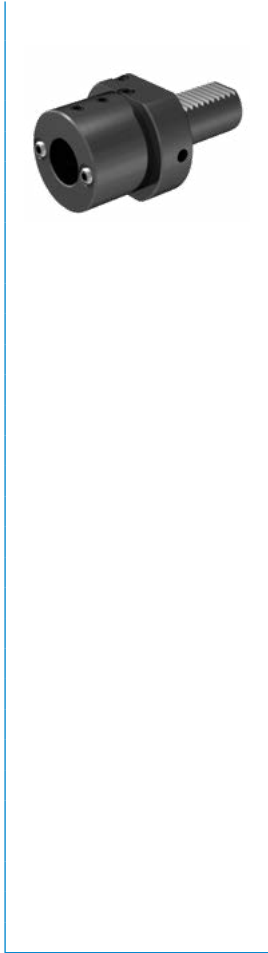
#### Drawing



VDI ØD	Ød1 [mm]	Ød2 [mm]	L1 [mm]	Order No.
16	6	32	44	<b>241.5710644</b>
16	8	32	44	<b>241.5710844</b>
16	10	32	44	<b>241.5711044</b>
16	12	40	44	<b>241.5711244</b>
16	16	40	44	<b>241.5711644</b>
20	8	40	50	<b>112.5710850</b>
20	10	40	50	<b>112.5711050</b>
20	12	40	50	<b>112.5711250</b>
20	16	40	50	<b>112.5711650</b>
20	20	50	50	<b>112.5712050</b>
20	25	50	60	<b>112.5712560</b>
25	8	40	50	<b>325.5710850</b>
25	10	40	50	<b>325.5711050</b>
25	12	40	50	<b>325.5711250</b>
25	16	40	50	<b>325.5711650</b>
25	20	58	50	<b>325.5712050</b>
25	25	58	60	<b>325.5712560</b>

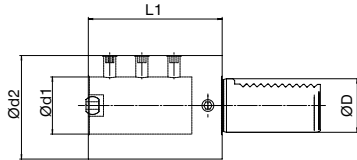
# STATIC HOLDER FORM E

## Boring Bar Holder: with IC + EC, form E2



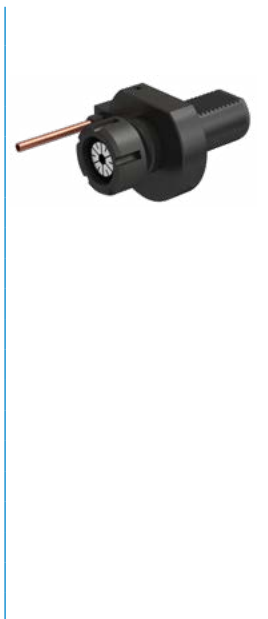
### ► Technical Data

#### Drawing



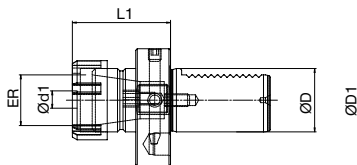
VDI ØD	Ød1 [mm]	Ød2 [mm]	L1 [mm]	Order No.
30	8	55	60	113.5710860
30	10	55	60	113.5711060
30	12	55	60	113.5711260
30	16	55	60	113.5711660
30	20	55	60	113.5712060
30	25	55	60	113.5712560
30	32	68	75	113.5713275
40	8	55	75	114.5710875
40	10	55	75	114.5711075
40	12	55	75	114.5711275
40	16	55	75	114.5711675
40	20	55	75	114.5712075
40	25	55	75	114.5712575
40	32	83	75	114.5713275
40	40	83	90	114.5714090
50	12	68	90	115.5711290
50	16	68	90	115.5711690
50	20	68	90	115.5712090
50	25	68	90	115.5712590
50	32	68	90	115.5713290
50	40	98	90	115.5714090
50	50	98	100	115.57150100
60	16	68	90	116.5711690
60	20	68	90	116.5712090
60	25	68	90	116.5712590
60	32	68	90	116.5713290
60	40	98	90	116.5714090
60	50	98	100	116.57150100

## Collet Chuck Holder : with IC + EC, external, DIN6499, form E4



### ► Technical Data

#### Drawing



VDI ØD	ER	Ød1 [mm]	ØD1 [mm]	L1 [mm]	Order No.
16	16	0,5-10	40	38	241.130E338
16	20	1-13	40	44	241.130E444
20	16	0,5-10	50	44	112.130E344
20	20	1-13	50	44	112.130E444
20	25	1-16	50	50	112.130E550
25	20	1-13	58	44	325.130E444
25	25	1-16	58	57	325.130E557
25	32	2-20	58	62	325.130E662
30	25	1-16	68	57	113.130E557
30	32	2-20	68	62	113.130E662
30	40	3-26	68	70	113.130E770
40	25	1-16	83	62	114.130E562
40	32	2-20	83	62	114.130E662
40	40	3-26	83	75	114.130E775
50	32	2-20	98	75	115.130E675
50	40	3-26	98	75	115.130E775
60	40	3-26	123	75	116.130E775



## Boring Bar Holder - Double: right hand, form E7

Drawing		VDI	$\varnothing d1$	$h1/h2$	B	$b1/b2$	L1	Order No.
$\varnothing D$	[mm]	[mm]	[mm]	[mm]	[mm]	[mm]	[mm]	
20	16	25/25	76	25/32	45	<b>112.5941645</b>		
20	20	25/25	76	25/32	45	<b>112.5942045</b>		
30	25	28/32	95	30/45	56	<b>113.5942556</b>		
30	32	28/32	110	35/50	66	<b>113.5943266</b>		
40	32	32,5/40	115	40/50	66	<b>114.5943266</b>		
40	40	32,5/40	115	40/50	90	<b>114.5944090</b>		
50	32	32,5/47,5	115	40/50	66	<b>115.5943266</b>		
50	40	32,5/47,5	115	40/50	90	<b>115.5944090</b>		
50	50	35/49	152	49/68	115	<b>115.59450115</b>		

## Boring Bar Holder - Double: left hand, form E8

Drawing		VDI	$\varnothing d1$	$h1/h2$	B	$b1/b2$	L1	Order No.
$\varnothing D$	[mm]	[mm]	[mm]	[mm]	[mm]	[mm]	[mm]	
20	16	25/25	76	25/32	45	<b>112.5951645</b>		
20	20	25/25	76	25/32	45	<b>112.5952045</b>		
30	25	28/32	95	30/45	56	<b>113.5952556</b>		
30	32	28/32	110	35/50	66	<b>113.5953266</b>		
40	32	32,5/40	115	40/50	66	<b>114.5953266</b>		
40	40	32,5/40	115	40/50	90	<b>114.5954090</b>		
50	32	32,5/47,5	115	40/50	66	<b>115.5953266</b>		
50	40	32,5/47,5	115	40/50	90	<b>115.5954090</b>		
50	50	35/49	152	49/68	115	<b>115.59550115</b>		

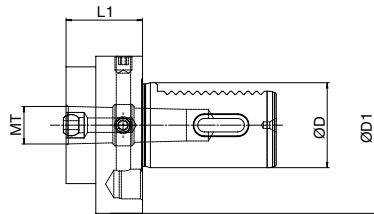
# STATIC HOLDER FORM F

## Morse Taper Holder: form F



### ► Technical Data

#### Drawing



VDI ØD	MT	ØD1 [mm]	L1 [mm]	Order No.
20	1	50	23	<b>112.061123</b>
25	1	58	23	<b>325.061123</b>
25	2	58	27	<b>325.061227</b>
30	1	68	27	<b>113.061127</b>
30	2	68	27	<b>113.061227</b>
30	3	68	73	<b>113.061350</b>
40	1	83	36	<b>114.061136</b>
40	2	83	36	<b>114.061236</b>
40	3	83	36	<b>114.061336</b>
40	4	83	80	<b>114.061480</b>
50	2	98	36	<b>115.061236</b>
50	3	98	36	<b>115.061336</b>
50	4	98	50	<b>115.061450</b>
60	3	123	36	<b>116.061336</b>
60	4	123	50	<b>116.061450</b>
60	5	123	63	<b>116.061563</b>

# STATIC HOLDER

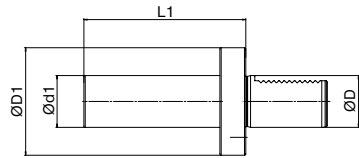
## MISCELLANEOUS

### Test Mandrel: form Y



#### ► Technical Data

#### Drawing



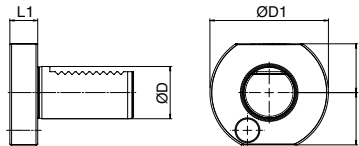
VDI ØD	Ød1 [mm]	ØD1 [mm]	L1 [mm]	Order No.
16	30	40	125	<b>241.24630125</b>
20	40	50	125	<b>112.24640125</b>
25	40	58	125	<b>325.24640125</b>
30	40	68	125	<b>113.24640125</b>
40	40	83	125	<b>114.24640125</b>
50	40	98	125	<b>115.24640125</b>
60	40	125	125	<b>116.24640125</b>

### Closing Plug: form Z2 - steel



#### ► Technical Data

#### Drawing



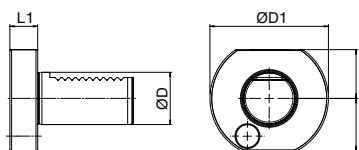
VDI ØD	ØD1 [mm]	L1 [mm]	Order No.
16	40	13	<b>241.581S</b>
20	50	16	<b>112.581S</b>
25	58	16	<b>325.581S</b>
30	68	16	<b>113.581S</b>
40	83	20	<b>114.581S</b>
50	98	20	<b>115.581S</b>
60	123	20	<b>116.581S</b>

### Closing Plug: form Z2 - plastic



#### ► Technical Data

#### Drawing



VDI ØD	ØD1 [mm]	L1 [mm]	Order No.
25	58	16	<b>325.581K</b>
30	68	16	<b>113.581K</b>
40	83	20	<b>114.581K</b>
50	98	20	<b>115.581K</b>

The contents and data are valid at the time of printing. Edition 07/2017

This catalogue was issued with great care and all specifications were checked for correctness. However, no liability is assumed for incorrect or incomplete information. BENZ GmbH Werkzeugsysteme reserves the right to make technical changes and improvements through continual further development of the products and services. All texts, images, representations and drawings in this catalogue are the property of BENZ GmbH Werkzeugsysteme and are protected by copyright. Any kind of reproduction, editing, modification, translation, filming or processing and saving in electronic systems is prohibited without the consent of BENZ GmbH Werkzeugsysteme.

**BENZ GmbH Werkzeugsysteme**

Kinzigpark 3  
77723 Gengenbach  
Germany

T +49 7803 504 300-0  
info@benztooling.com  
www.benztooling.com

